

# Riverview Village

3300 Cobb Parkway, Atlanta, GA

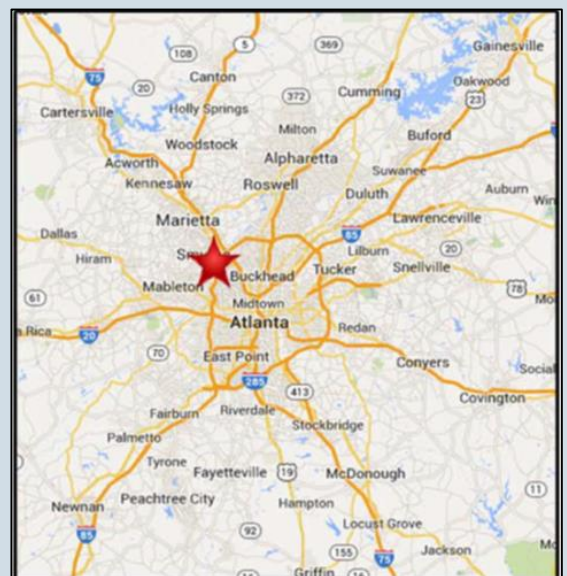
**Cobb County**

IMPECCABLE STYLE



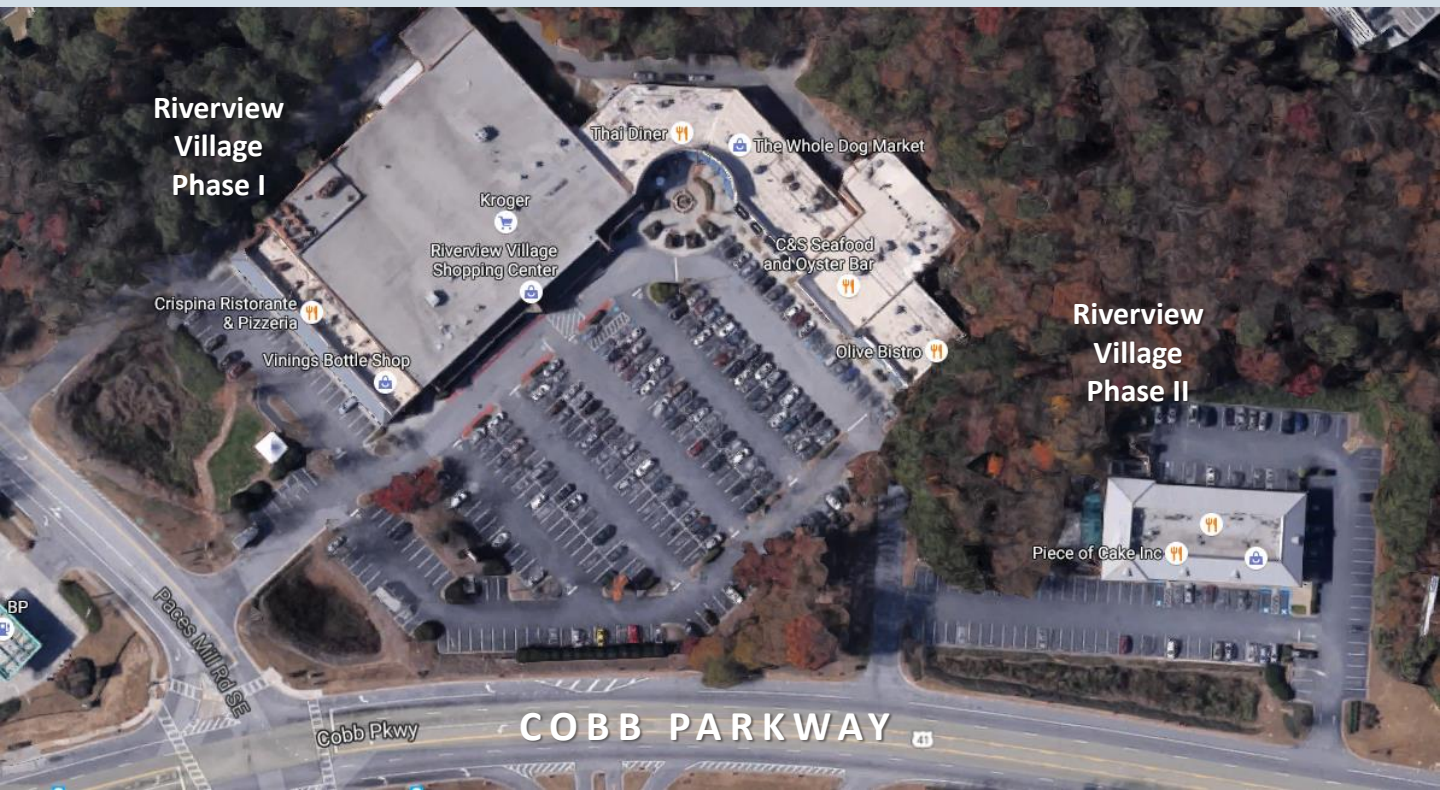
CONVENIENT LOCATION

**Riverview Village** is located on the north side of Atlanta near the intersection of I-75 and I-285 on Highway 41 (Cobb Parkway) at Paces Mill Road. This thriving, Kroger-anchored center features a unique blend of retailers including Piece of Cake, C&S Oyster, Thai Diner, and Hoki Sushi. **Located in the affluent Vinings community, Riverview Village is a convenient and enjoyable shopping destination.**



# Riverview Village

1,725 – 4,678 Square Feet Available



RIVERVIEW I		
Suite	Tenant	SF
100	Kroger	42,130
102	Riverview Veterinary	1,645
104	Rosso Bar & Tapas	1,444
106	Thai Diner	3,156
108	Whole Dog Market	1,396
110	Stellar Power Yoga	1,470
112	Nail Talk & Tan	2,100
114	Hoki Sushi	1,200
116	The Herb Shop	1,215

RIVERVIEW I		
Suite	Tenant	SF
118	C&S Oyster Bar	4,299
120	AVAILABLE	4,678
122	Brazilian Threading	1,170
124	Kam's Alterations	1,200
126	Olive Bistro	1,260
200	Vinings Bottle Shop	1,800
204	Vinings Shoe Repair	350
208	Crispina Italian	2,050
212	Crispina Italian	600
216	Classic Cleaners	1,200

RIVERVIEW II		
Suite	Tenant	SF
100	Doc Green's	3,266
101	Piece of Cake	783
102	Yarning for Ewe	984
103	Supercuts	984
104	Nail Ly & Tan	983
105	Master Jewelry	983
106	Aaron's Lamp Shade	983
200	AVAILABLE	1,725
202	State Farm – Jared Mula Agency	1,733
205	AVAILABLE	1,967
206	Jenny Craig	1,976

## DEMOGRAPHICS

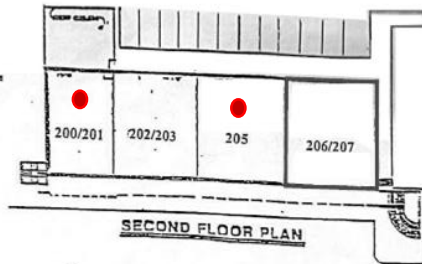
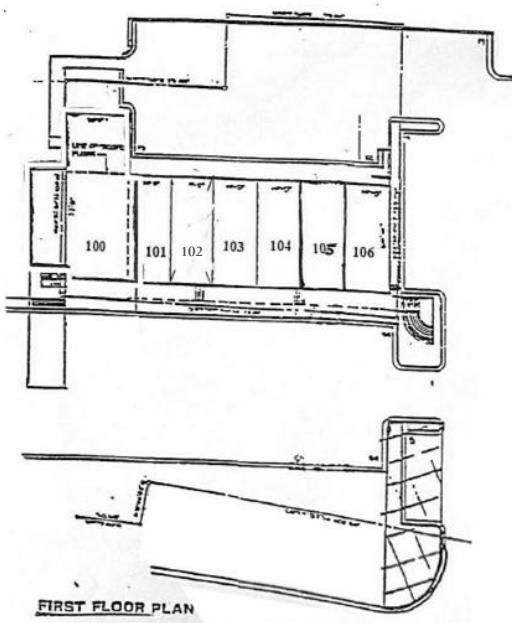
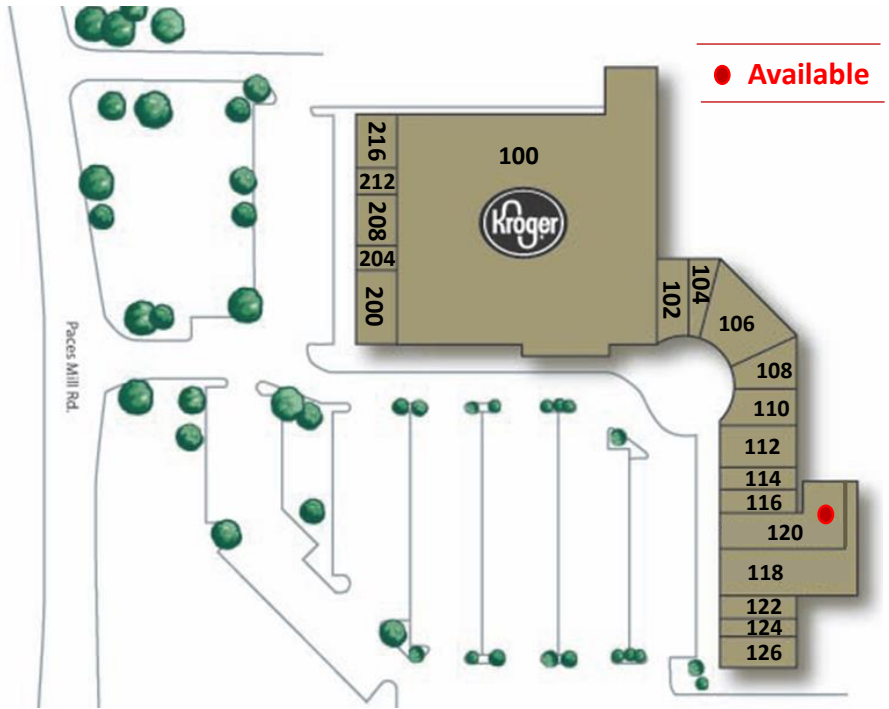
	1 MILE	3 MILES	5 MILES
Population	9,035	75,150	202,691
Households	5,078	38,278	92,570
Avg. HH Income	\$103,494	\$96,159	\$99,418

Avg. Traffic count on Cobb Parkway:  
**20,980 cars daily**

# Riverview Village

## Site Plans

### RIVERVIEW VILLAGE PHASE I



Riverview Center - Phase II  
Cobb Parkway @ Paces Mill Road

● Available

### RIVERVIEW VILLAGE PHASE II

A MADISON RETAIL PROPERTY



MADISON RETAIL, LLC